



Kippara Road House

Situated on a steep site in Sydney's eastern suburbs, this house enjoys a 180-degree panoramic view stretching from Sydney Harbor to the northwest and down the coastline to the south. The house is designed around a central core consisting of a curved concrete wall that starts at ground level and rises up through the three levels.

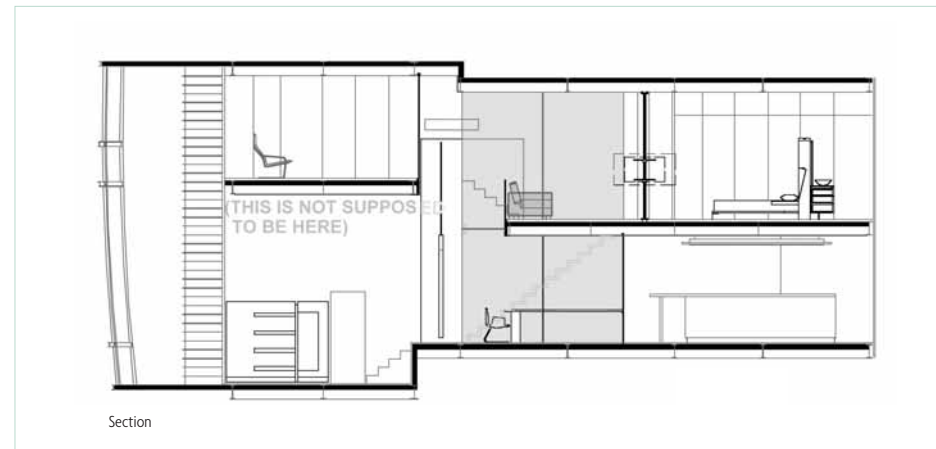
Architect: CSA Architects
Location: Sydney, Australia
Date of construction: 2004
Photography: Richard Powers



10

A long window seat serves as an extra seating area with pillows, and doubles as a shelf for decorative objects and books.





12

To contrast with the concrete, 200-mm-wide wooden floorboards were used to cover the floors of the main level, while rugs were added for extra warmth.