

STOREFRONT LOFT

1000
SQUARE FEET

ARCHITECT MESSANA O'RORKE ARCHITECTS • PHOTOGRAPHER ELIZABETH FELICELLA

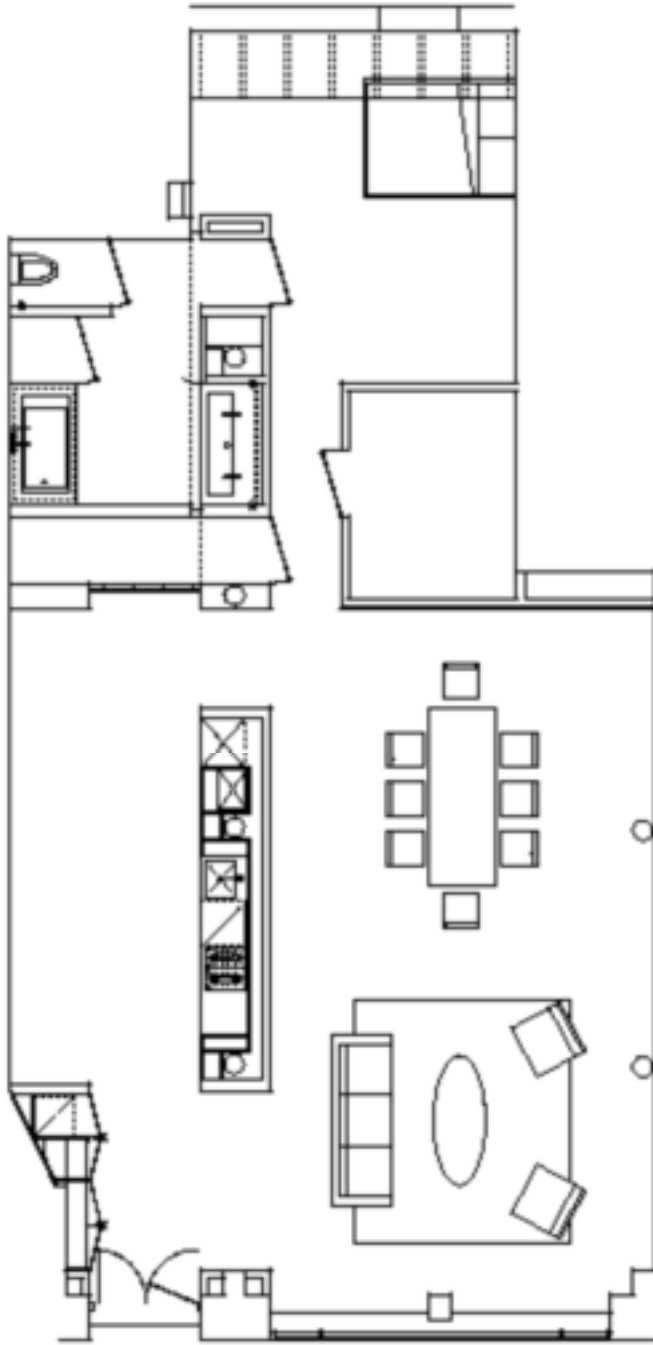
This clean, modern loft was fashioned from a storefront in the East Village of Manhattan. While the space required a complete remodeling, it nevertheless had twelve-foot ceilings, steel columns and thick wooden beams that the architects used to create a dramatic interior living space. A wall of opaque plastic simulates sunshine opposite the entry hall. The apartment is entered through a square arch that opens into the living area that has a high-level slot window, which provides views of the sky to the south. The kitchen is finished in white lacquer and stainless steel.

A linear light fixture runs the length of the space, passing from the large gallery-type space through a narrow gap between enclosed spaces into another space beyond. Each area is defined by architecture, but function is abstracted, hidden and obscured. A sofa, a table, or a bed becomes the only element that describes the domestic function of each space.





Floor Plan



PREVIOUS PAGE: A view from the dining area toward the front of the apartment, which is at street level.
BELOW: A view of the living area from the entry. The linear lighting fixture that runs the length of the apartment is visible at the top.
RIGHT: A view from the living area to the entry.







LEFT: The simple, modern kitchen is finished in white lacquer with stainless steel appliances.

RIGHT: A view from the kitchen back to the entry.





LEFT: Existing wooden beams were left exposed, their coarseness contrasting with the apartment's smooth white surfaces.

RIGHT: Translucent sliding glass doors provide privacy while bringing light into the bedroom.



RIGHT AND FAR RIGHT: The generous spa-like bathroom continues the clean, minimalist theme used throughout the storefront loft.



