

This is a series of five independent fonts that House Industries developed as a tribute to the legendary Ed Benguiat, creator of endless typefaces both for Photo-Lettering Inc and Internacional Typeface Corporation (ITC). Ed Benguiat is probably one of the most prolific typeface designers in history.

House Industries brought together a varied collection of fonts that show the great diversity of styles of this typeface designer. Fascinated by this subject, Ken Barber, letterer and typeface designer, and member of the House Industries team, generated a set of digital fonts and added new elements, such as the ligatures and the diacritics, which were not included in the original designs.

The five fonts of this collection are presented in OpenType format and include characteristics that give them a convincing appearance of hand-writing. This is especially noticeable in the ligatures of Ed Script, which give the font a natural appearance. Ed Interlock contains a series of 1000 combinations of different letters based on contextual, alternative characters. This means that certain characters only appear when a certain combination of letters is typed. Ed Gothic has two versions of different styles. The collection also includes a set of more than 50 illustrative icons known as Bengbats and an exclusive interview with Ed Bengiat.

This collection is fun and friendly, with a sense of humor, which is typical of House Industries, and also offers a wide range of possibilities.

**BENGUIAT**

# THE ED BENGUIAT FONT COLLECTION

Family: Ed Benguiat Collection  
Variants: Ed Interlock, Ed Gothic, Ed Brush, Ed Script, Ed Roman  
Designer: House Industries  
Year: 2004  
Distributor: House Industries  
Use: Display  
Other uses: Not recommended



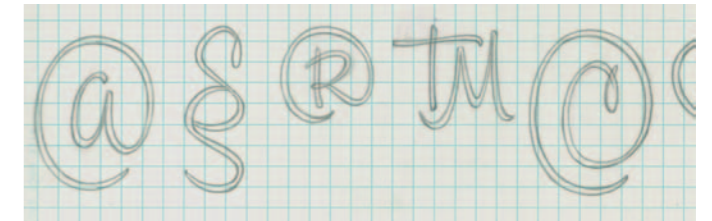
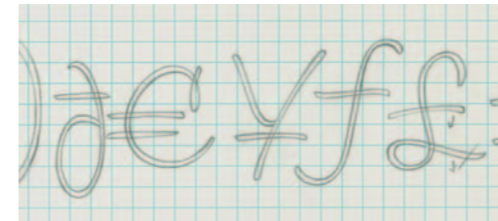
Ossifragi vocificat quinquennalis concubine. Medusa satis infeliciter insectat vix gulosus fiducias. Saetosus suis celeriter adquiret rures. Quadrupel chirographi, quamquam lascivius concubine vocificat tremulus zothecas. Plane saetosus c

~~BOUNCE~~

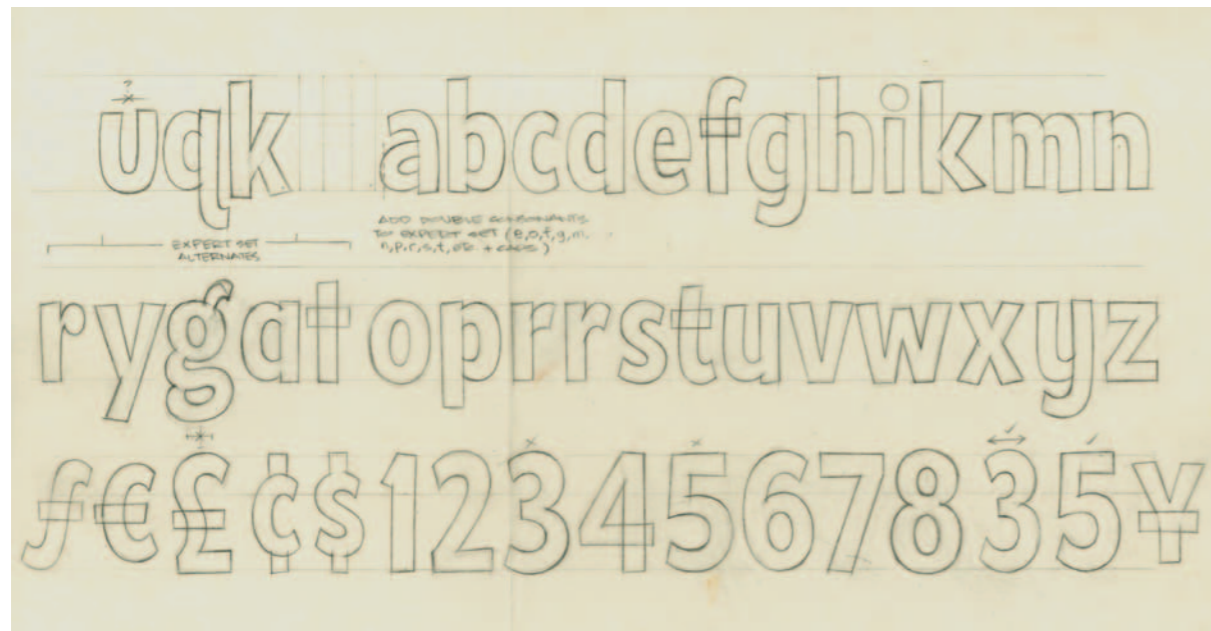
ANIMATION  
ANIMATION  
ANIMATION

ar → ar

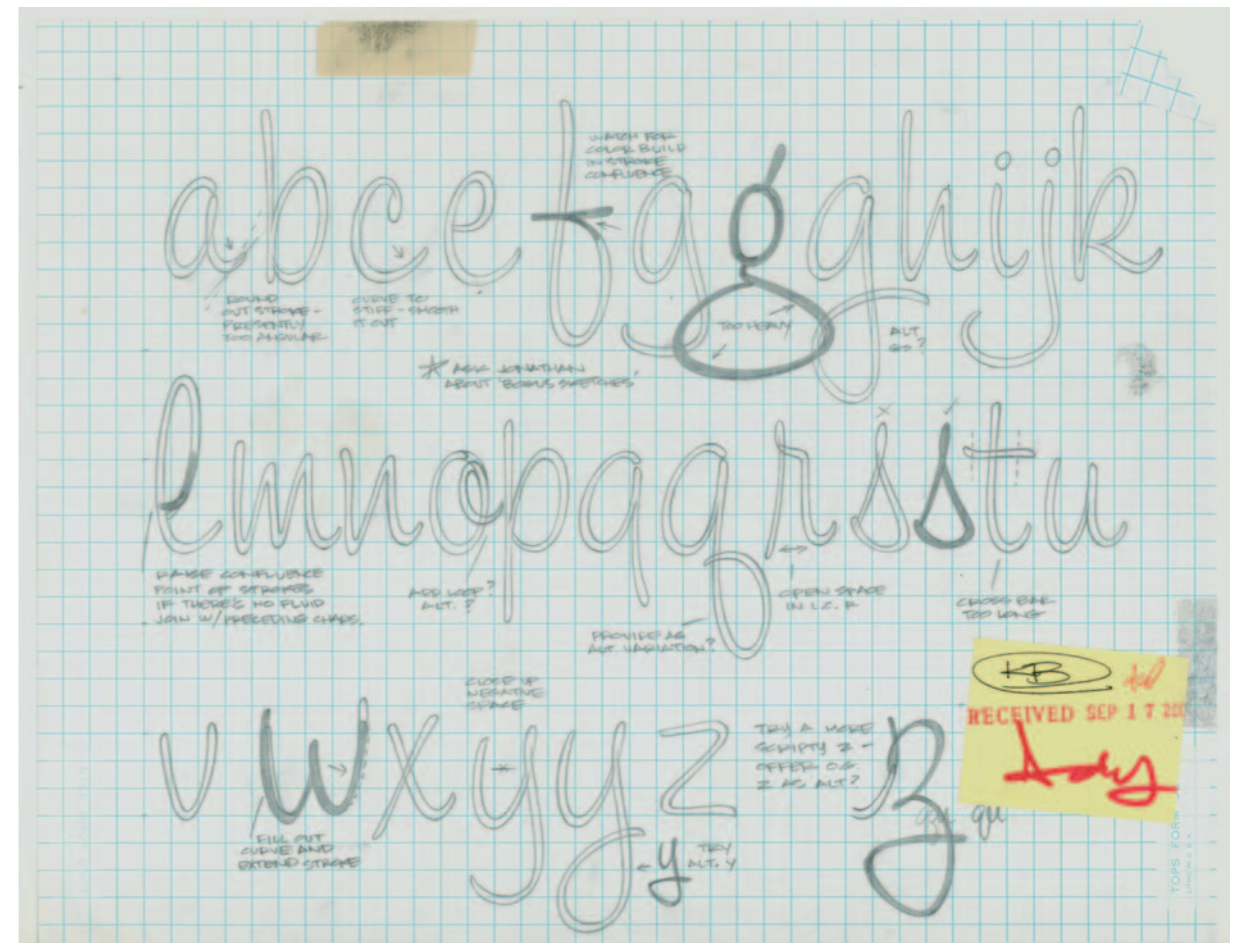
ar er dr er lr ir kr  
or tr ur ax ex ix ux  
arr err irr rr urr ss



Details



Sketches



Sketches