

annex|5
An Epstein Design Group

China Science and Technology Museum
Beijing, China

Taking advantage of its unique site geometry and prominent location within the 2008 Olympics Park, the museum has been composed as a set of discrete pavilions, each with a distinct function. These pavilions are set on a slightly raised green plaza that serves as a public park as well as a venue for museum events and outdoor exhibits. The majority of the museum spaces are located under this plaza. The entire composition is unified visually and functionally by the elevated children's museum exhibition hall, which floats above the plaza and follows the perimeter of the park,

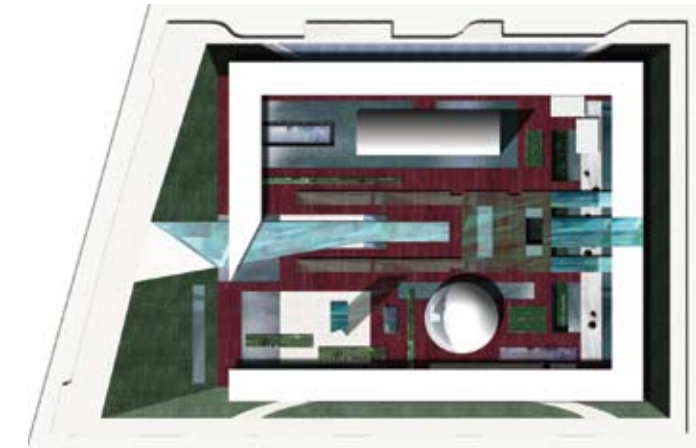
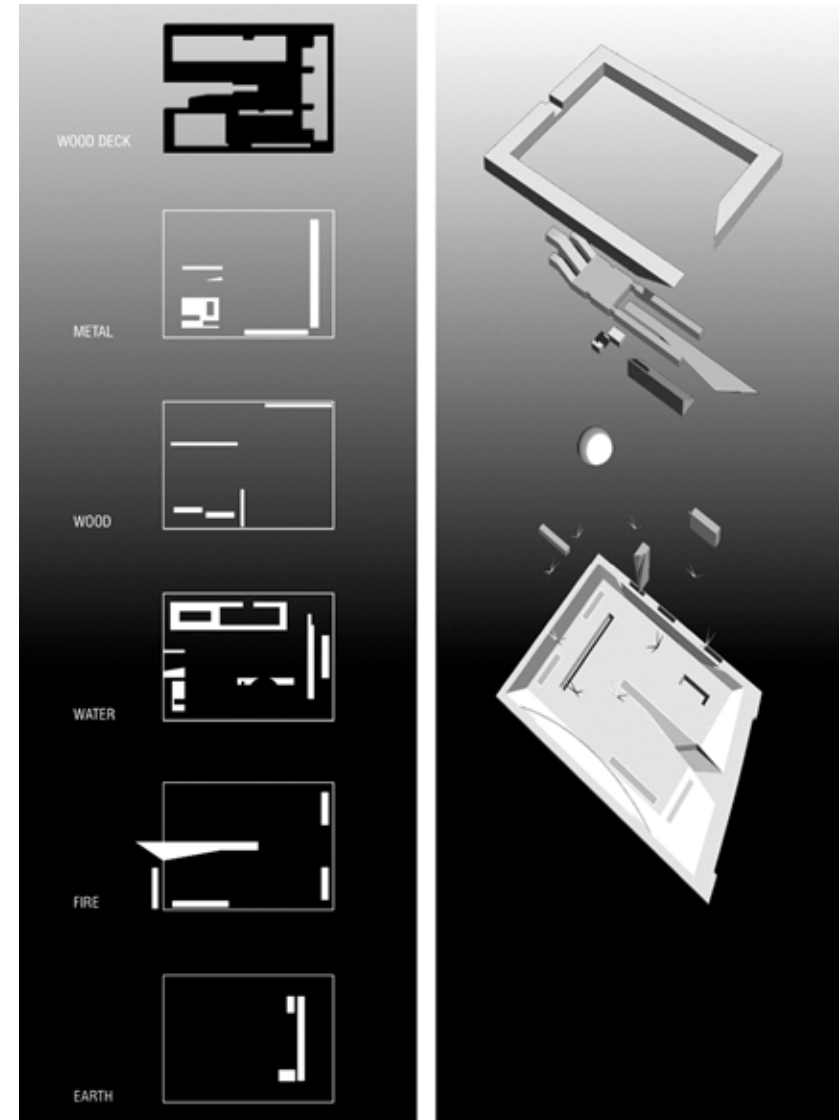
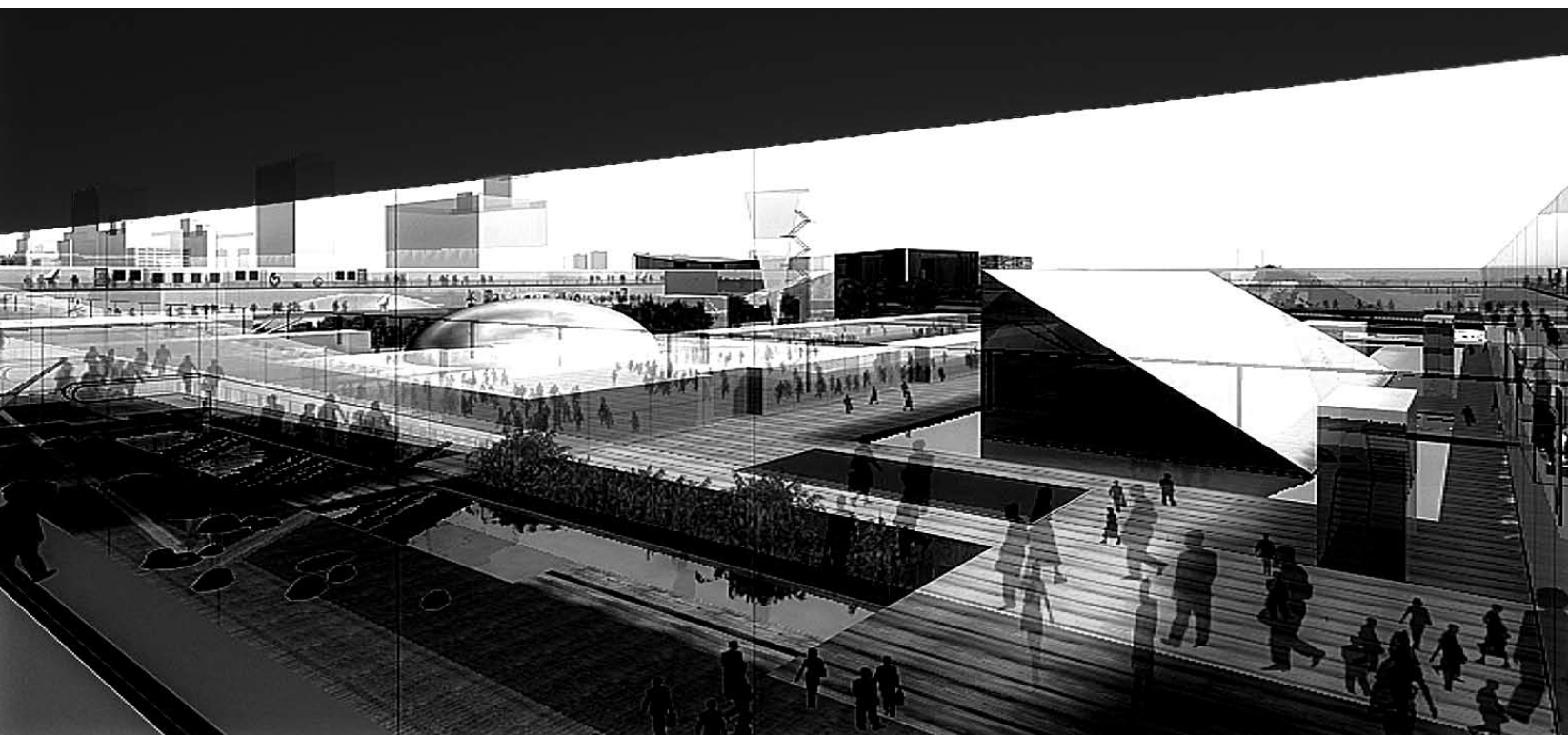
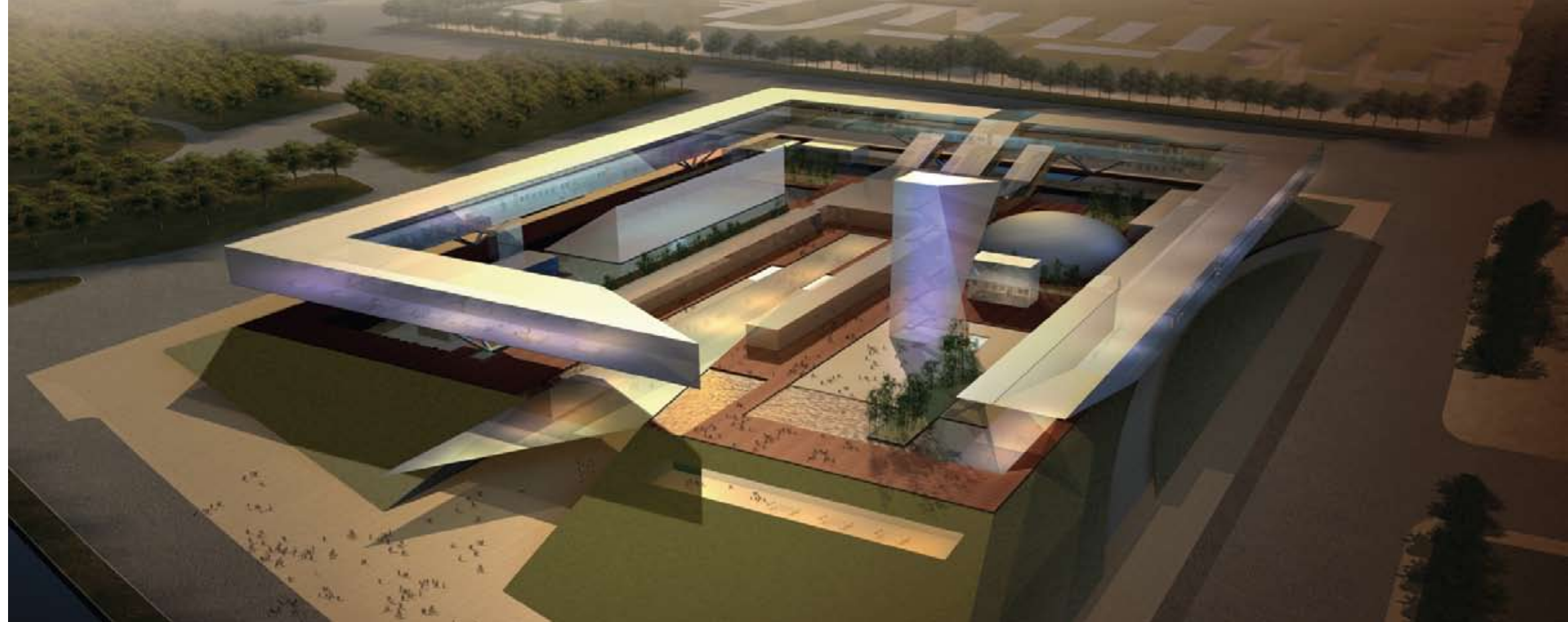
defining its boundaries. Symbolically, the integration of the green park with the museum serves as a powerful reminder that "nature" and "science and technology" are intimately related—technology derived from science and science from nature. The project has been designed to be sustainable and environmentally responsible. The bulk of it has been placed below grade, sheltered on all sides by earth, thus producing enormous savings in energy for both cooling and heating. The mechanical system has been designed to use the aerated garden pools as heat sinks for the air-conditioning

system, and these pools will be replenished from rainwater storage tanks concealed under the landscaped berms.

Right: Museum seen from above, with elevated children's galleries defining perimeter.

Below: Low-level view, showing views into complex and supports for elevated perimeter galleries.

Bottom: Museum pavilions composed as discrete objects in a public park.



Left: Analytical drawings of museum's layers and components.

Above: Plan of museum on trapezoidal site.